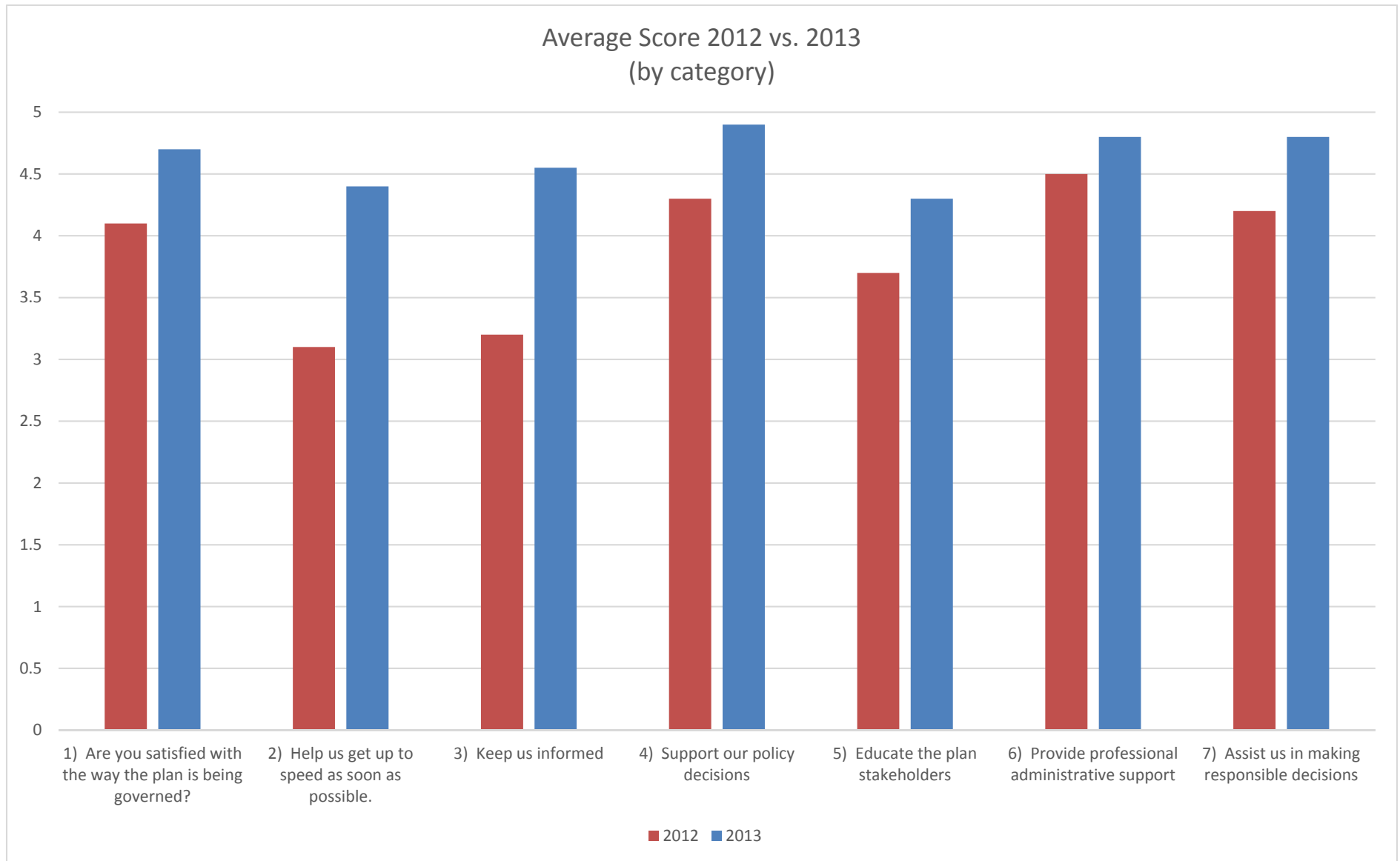


Summary of Expectations

<p>Responsibly govern the plan.</p>	<p>➤ What does “responsibly govern” mean to the Board?</p> <ul style="list-style-type: none"> – Supporting this goal is the primary expectation for Board members. – The Board expressed a very high level of satisfaction with the results in this area.
<p>Help us get up to speed as soon as possible.</p>	<p>➤ What do new Board members need to get up to speed ASAP?</p> <ul style="list-style-type: none"> – New Board members need to participate effectively as quickly as possible. – This is an area where the expectations of all Board members are not being met.
<p>Keep us informed.</p>	<p>➤ What do Board members need to stay informed?</p> <ul style="list-style-type: none"> – Board members want to be fully informed when they consider policy issues at Board meetings. – Some Board members expressed a desire to receive more updates on administrative issues. – This is an area where the expectations of all Board members are not being fully met.
<p>Support our policy decisions.</p>	<p>➤ What do you need from the team in making and supporting policy decisions? Do these expectation change if the Board decision is not unanimous?</p> <ul style="list-style-type: none"> – Support the Board policy decisions and legislative recommendations before the Legislature and other State agencies. – Although Board members consider the results of the Board’s policy decisions and legislative recommendations to be very successful, there were questions about the methods used to support Board legislation.
<p>Educate the plan stakeholders.</p>	<p>➤ What do stakeholders need to know?</p> <ul style="list-style-type: none"> – Educate plan members, employers, legislators and the public more about LEOFF Plan 2 and Board activities. – Opportunities exist to use technology to deliver information to a wider audience. – This is an area where Board members identified much success as well as a need for further improvement.
<p>Provide professional administrative support.</p>	<p>➤ What are the most important administrative functions to you?</p> <ul style="list-style-type: none"> – Board members rely on the team to support their attendance at meetings and their educational activities outside of Board meetings. – Board members rely on the team to operate the agency within the guidelines established by the Board and the State. – The quality of agency employees was widely acknowledged and credited for success in this area. – Board members expressed a high level of satisfaction with the facilities for Board meetings and the customer service that they receive related to education. – Board members also expressed confidence that the agency was being responsibly managed.
<p>Assist us in making responsible decisions.</p>	<p>➤ What kind of assistance helps you make responsible decisions?</p> <ul style="list-style-type: none"> – Board members want to make responsible decisions for the plan. – Board members rely on the expertise and seek advice from agency team members to help achieve the Board’s mission. – This is an area where Board members expressed a very high level of satisfaction.

2012 – 2013

Expectation Rating Comparison by Expectation



2012 – 2013

Expectation Rating Comparison Totals

